



MULTIMODAL LOGISTICS PLATFORM SOFIA-WEST



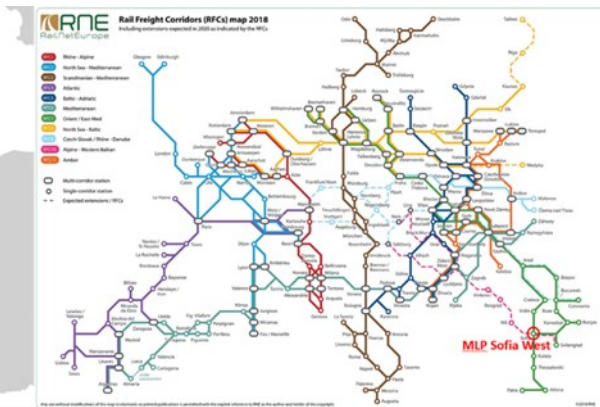
Strategic EU Location and Interconnectivity

The Multimodal Terminal Sofia-West is located in the area of Sofia, Bulgaria, that is the cross-road of several important EU TEN-T Core corridors:

- Orient/East-Med (OEM) Corridor of the trans-European core network
- Baltic Sea - Black Sea - Aegean Sea (BBA) and
- Western Balkans (WB),

as well as along the following Rail Freight Corridors:

- Rail Freight Corridor (RFC) 7 (OEM) and RFC 10 (Alpine/ Western Balkans).



Strategic Hub for Worldwide Markets

Located in the vicinity of Sofia and some 50 km from Bulgarian-Serbian border, next to Voluyak shunting station, the Multimodal Terminal Sofia-West benefits from a key interconnectivity by rail and road between Bulgaria and most important European and Worldwide markets.

The Terminal has excellent connection for combined freight transport both by rail and road, and thus providing for wide-range of services to partners and customers, 24 hours a day, 365 days a year, to start operation from 2026.

The Multimodal Hub shall improve the conditions for serving Bulgarian import and export of goods to be transported by intermodal and railway transport, combined freight from/to:

- Western and Central Europe
- Turkey and
- other countries, the trade flows with which being now served via maritime ports of Thessaloniki or Piraeus (Greece) and Varna/ Burgas (Bulgaria); these include but are not limited to Georgia, Azerbaijan, China/ Far East, Ukraine, Armenia, etc.

Co-modality and Synchromodality

With its strategic location and connectivity, the Multimodal Terminal and Logistics platform Sofia- West shall be one of the key European hubs for strategic combined traffic and combined transport terminal located in Bulgaria.

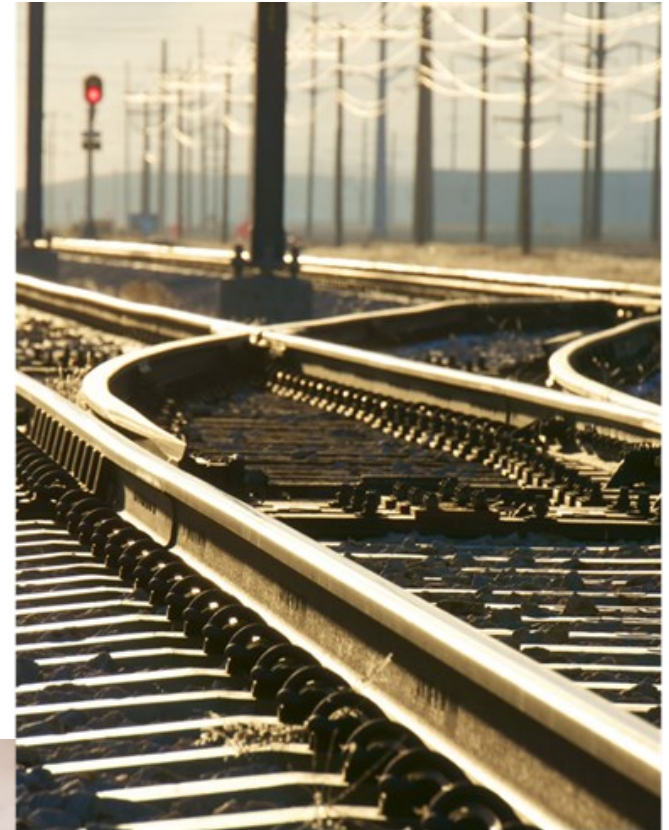
The Multimodal Hub Sofia-West shall support the EU wide co-modal transport services making part of a well synchronized, smart and seamless network, by synchronizing intermodal services between modes and with shippers (Synchromodality).



Operational Excellence

Our Partners and Customers will benefit from:

- Enhanced efficiency, accuracy, and overall management of operations implementing TOS and GOS
- Improve speed, accuracy, and efficiency in document processing use of OCR
- Real-time data availability and Integration with Terminal Operation Systems (TOS)
- Ensured visibility of movements and operations in real time, exchange of standardized information in real time, using digital transport data and EDIGES interfaces, as part of the combined transport chain
- GHG and air pollution savings due to use of clean electric transshipment equipment charged from renewable energy produced locally in the terminal



At a Glance

The Multimodal Terminal Sofia-West provides all operations for the combined freight transport chain and extensive services and shall be continuously upgrading its service portfolio in line with the latest requirements and the needs of the customers and climate goals deploying ICT and integrating Technology innovation and digitalization.

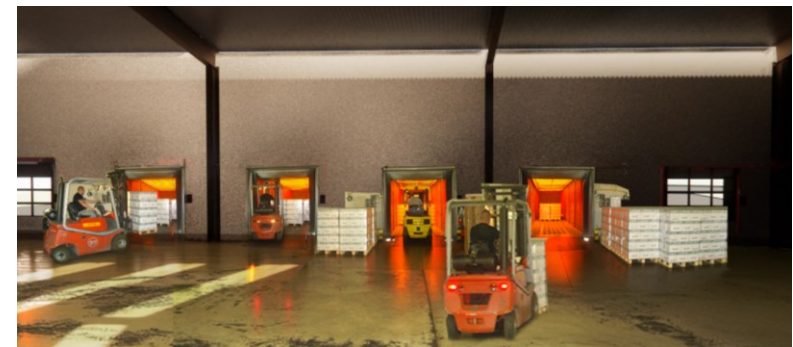
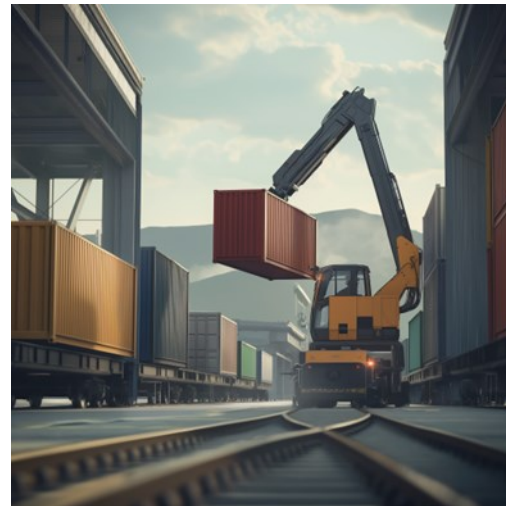
Terminal area:	70 000 sq.m.
Warehouse area:	3 300 sq.m.
Capacity:	60 000 ITU/year
Equipment:	
1 loading/unloading track (740 meters long)	
2 loading tracks (2x 560 meters long)	
1 loading track sheltered ramp (290 meters long)	
3 Reach stackers,	
2 Forklifts for handling paper reels	
1 terminal tractor	



Services

The Multimodal Terminal provides handling of combined transport consignments from rail to road and vice versa.

- Handling of containers, swap-bodies and semi-trailers
- Empty units depot
- Container examination and repair
- Washing of containers
- Labeling
- Photographed seal control
- Weighing
- Handling of conventional consignments (wagon-loads) and wagon-truck operations
- Cross-docking operations wagon-truck and vice-versa
- Paper reels handling
- 3PL (third-party logistics)
- Storage services
- Customs -bonded warehousing



Services

Together with the container handling, conventional consignments (wagon-load) and storage services, our terminal offers also customs services to support a smooth logistics process and supply chain efficiency of our customers.



Paper handling services

Having long experience in Paper reels handling since 2010 (from Dunaujvaros, Spremberg, Pitten, Nettingsdorf, Ulmerfeld Hausmening, Ruzomberok) with the new Multimodal Hub, TransExpress will improve the service offering smooth and efficient specialized logistics services.



Paper handling services

Special equipment: Fork lift trucks 5,5 t and 3,5 t. with clamps for paper reels model Yale GLP55VX and Yale GLP35VX - 2 pieces



Sustainability

TransExpress implements the new Multimodal and Logistics Terminal Sofia-West, co-funded by the European Union.

The Multimodal Terminal shall improve the access to the rail system both for the conventional rail traffic and intermodal freight. It will also improve the efficiency of the transport system allowing for longer trains freight (740 m) in a region where similar infrastructure is missing. Overall, it will support a more sustainable transport system, toward climate neutrality and zero pollution targets.

TransExpress is a contractual carrier and can offer smart, sustainable and resilient logistics solutions from end-to end with a volume metric footprint measuring and offset if required.

CO₂ emissions savings, as well as their door-to-door carbon footprint calculating through CO₂:

- avoiding,
- reducing,
- offset

The above is complimentary over the physical carriers which are not so neutral offering their services thus allowing our customers to reach the ecological targets



Multimodal Logistics Platform Sofia-West

Rail-road Intermodal Terminal Volyuak

August 2024

petrov@transexpress.bg